

Prima

Simple IP20 surface mounting

Catalogue 2009



Schneider
Electric

Prima is your simple
IP20 surface mounting solution
for refurbishment



P116730



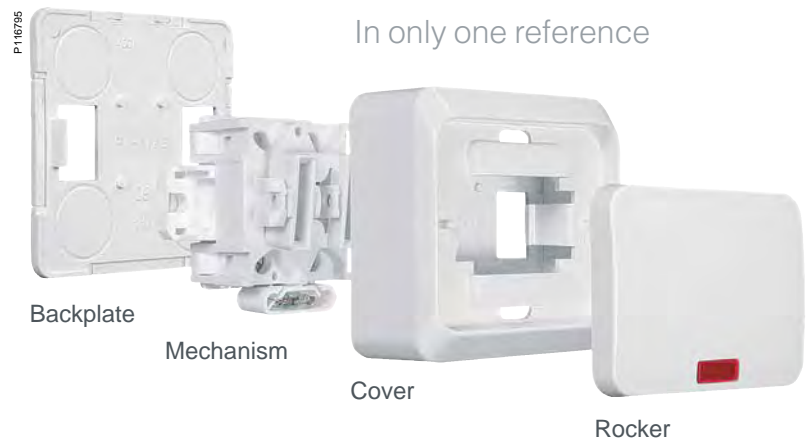
> Simple

The Prima range offers the types of switches and socket outlets you need for refurbishment projects when surface-mounting is a must.

Installation is easy with Prima's convenient screw terminals and can be associated to KM minitrunking accessory.

> Cost-effective

Good quality for cost is what it's all about for surface-mounting refurbishment, country houses and places where IP20 protection is required, with a very good value for money.



> Style

The robust look and feel of trim-sized Prima switches and socket-outlets appeals to customers and installers alike.

Simple to install

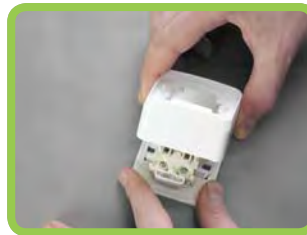
Prima switches



P116741
Use a screwdriver to lightly lever the rocker.



P116742
Lever the cover snaps on both sides of the insert, pushing the screwdriver handle towards the centre of the switch, and remove the cover.



P116744
Remove the backplate and determine the position of outgoing wires (through backplate or side of cover).



P116745
Connect wires to the terminals according to the markings on the back of the insert.



P116746
Snap the insert onto the backplate and fix the insert to the wall with screws. Distance between screws: 38 mm.

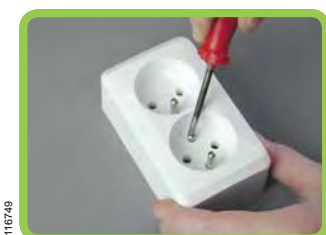


P116747
Snap on the cover.



P116748
Press in the rocker.

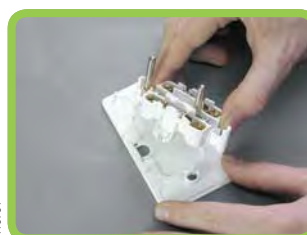
Prima socket-outlets



P116749
Unscrew the cover fixing screw.



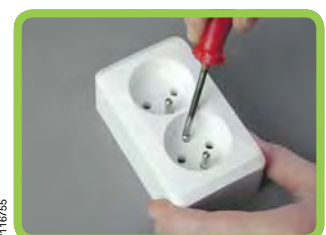
P116750
Remove the cover.



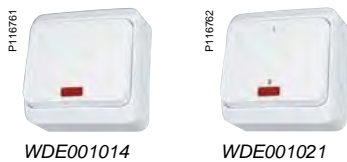
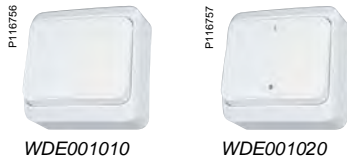
P116751
Remove the backplate, determine the position.



P116753
Snap the insert onto the backplate, fix the insert to the wall with screws (distance between screws: 38 mm).



P116755
Fix the cover screw.



Switches with screw terminals

10 AX - 250 V AC switches

	1-pole	2-pole
Color		
<input type="checkbox"/> white	WDE001010	WDE001020
<input type="checkbox"/> cream	WDE001110	WDE001120

Dimensions in mm (W x H x D) = 61 x 61 x 35

Intermediate		
Color		
<input type="checkbox"/> white	WDE001070	
<input type="checkbox"/> cream	WDE001170	

Dimensions in mm (W x H x D) = 61 x 61 x 35

2-circuit		
Color		
<input type="checkbox"/> white	WDE001050	
<input type="checkbox"/> cream	WDE001150	

Dimensions in mm (W x H x D) = 61 x 61 x 35

2-way, with stairs symbol		
Color		
<input type="checkbox"/> white	WDE001060	
<input type="checkbox"/> cream	WDE001160	

Dimensions in mm (W x H x D) = 61 x 61 x 35

10 AX - 250 V AC switches with locator lamp

	1-pole	2-pole
Color		
<input type="checkbox"/> white	WDE001014	WDE001021
<input type="checkbox"/> cream	WDE001114	WDE001121

Dimensions in mm (W x H x D) = 61 x 61 x 35

Intermediate		
Color		
<input type="checkbox"/> white	WDE001071	
<input type="checkbox"/> cream	WDE001171	

Dimensions in mm (W x H x D) = 61 x 61 x 35

2-circuit		
Color		
<input type="checkbox"/> white	WDE001051	
<input type="checkbox"/> cream	WDE001151	

Dimensions in mm (W x H x D) = 61 x 61 x 35



WDE001061



WDE001012



WDE001013



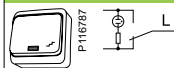
WDE001015



WDE001016

10 AX - 250 V AC switches with locator lamp (cont'd)

2-way, with stairs symbol



Color

- white **WDE001061**
- cream **WDE001161**

Dimensions in mm (W x H x D) = 61 x 61 x 35

10 A - 250 V AC push-buttons

With bell symbol



Color

- white **WDE001012**
- cream **WDE001112**

Dimensions in mm (W x H x D) = 61 x 61 x 35

With light symbol



Color

- white **WDE001013**
- cream **WDE001113**

Dimensions in mm (W x H x D) = 61 x 61 x 35

10 A - 250 V AC push-buttons with locator lamp

With bell symbol



Color

- white **WDE001015**
- cream **WDE001115**

Dimensions in mm (W x H x D) = 61 x 61 x 35

With light symbol



Color

- white **WDE001016**
- cream **WDE001116**

Dimensions in mm (W x H x D) = 61 x 61 x 35

Socket-outlets with screw terminals

Socket-outlets with side earth

16 A - 250 V AC, 2P+E



Color	
<input type="checkbox"/> white	WDE001080
<input type="checkbox"/> cream	WDE001180

Dimensions in mm (W x H x D) = 61 x 61 x 43.5

Socket-outlets with pin earth

16 A - 250 V AC, 2P+E



Color	
<input type="checkbox"/> white	WDE001030
<input type="checkbox"/> cream	WDE001130

Dimensions in mm (W x H x D) = 61 x 61 x 41

Socket-outlets without earth contact

16 A - 250 V AC, 2P

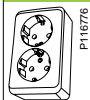


Color	
<input type="checkbox"/> white	WDE001000
<input type="checkbox"/> cream	WDE001100

Dimensions in mm (W x H x D) = 61 x 61 x 31

Double socket-outlets with side earth

16 A - 250 V AC, 2P+E



Color	
<input type="checkbox"/> white	WDE001048
<input type="checkbox"/> cream	WDE001148

Dimensions in mm (W x H x D) = 61 x 101 x 43.5

Double socket-outlets with pin earth

16 A - 250 V AC, 2P+E



Color	
<input type="checkbox"/> white	WDE001043
<input type="checkbox"/> cream	WDE001143

Dimensions in mm (W x H x D) = 61 x 101 x 41

Double socket-outlets without earth contact

16 A - 250 V AC, 2P



Color	
<input type="checkbox"/> white	WDE001040
<input type="checkbox"/> cream	WDE001140

Dimensions in mm (W x H x D) = 61 x 101 x 31



WDE001080



WDE001030



WDE001000



WDE001048



WDE001043



WDE001040