

Rittal – The System.

Faster – better – everywhere.

VX25 system additions

EMC enclosure, system accessories



Supplement to
VX25 brochure

VX25.
**SYSTEM
PERFECTION.**

ENCLOSURES

POWER DISTRIBUTION

CLIMATE CONTROL

IT INFRASTRUCTURE

SOFTWARE & SERVICES



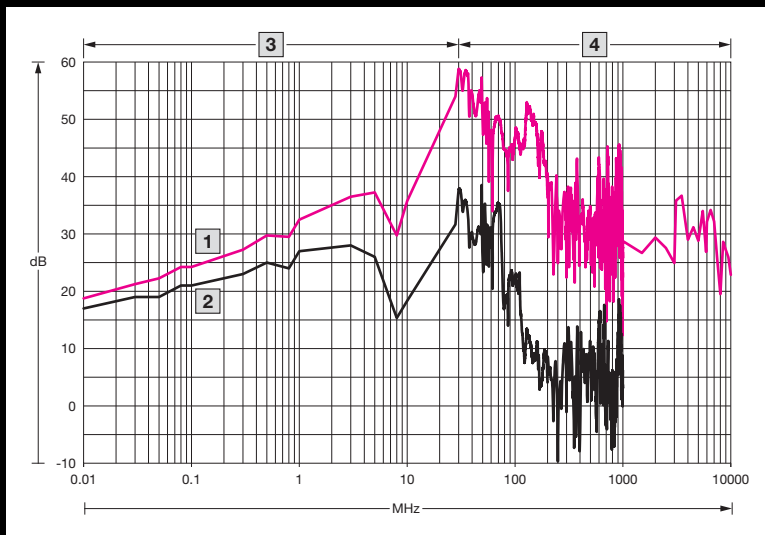
FRIEDHELM LOH GROUP

NEW



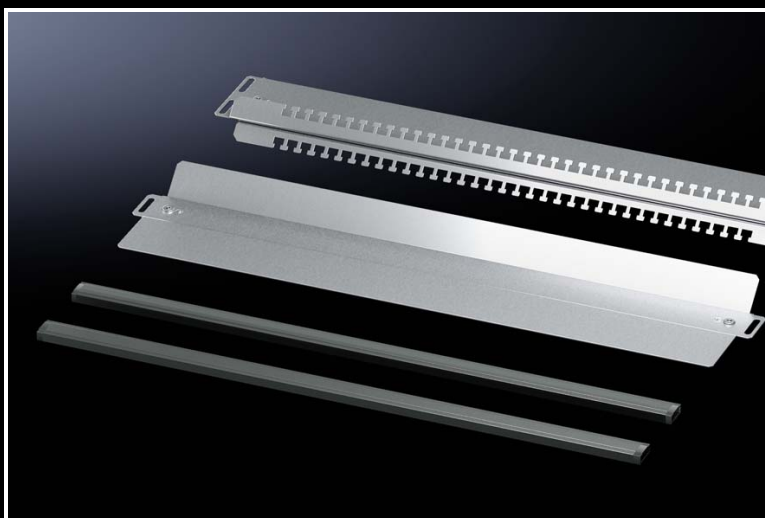
Baying enclosure system VX25, EMC enclosure

When using high-frequency electrical power in industrial processes such as high-frequency welding, particularly intensive electromagnetic interference fields can occur. In such cases, the shielding effect of basic enclosures is often insufficient. The VX25 EMC enclosures have been tested in an independent test laboratory to verify their shielding properties. Unlike the basic VX25 enclosures, the EMC version is made from zinc magnesium-coated sheet steel, and the interior surfaces and enclosure frame are paint-free. The exterior walls of the enclosures are connected to one another via the enclosure frame in an electrically conductive, largely slot-free manner, thanks to a special conductive seal.



MHz = Frequency
dB = RF attenuation

- 1 EMC enclosure
- 2 Standard enclosure
- 3 H field
- 4 EM wave



With our extensive range of EMC system accessories, even critical areas such as the cable entry can be incorporated into the protective measure for optimum effect.

Baying enclosure system VX25



System accessories Page 5

The large enclosures in the VX25 series offer a good level of shielding across a broad frequency range, even in the standard version. For increased EMC requirements, Rittal's VX25 enclosure is also available in a high RF attenuation version.

Material and surface finish:

- Enclosure frame: Sheet steel, 1.5 mm, with magnesium zinc coating
- Roof: Sheet steel, 1.5 mm, with magnesium zinc coating, spray-finished on the outside and paint-free on the inside

- Door: Sheet steel, 2 mm, with magnesium zinc coating, spray-finished on the outside and paint-free on the inside
- Rear panel: Sheet steel, 1.5 mm, with magnesium zinc coating, spray-finished on the outside and paint-free on the inside
- Gland plates: Sheet steel, 1.5 mm, zinc-plated
- Mounting plate: Sheet steel, 3 mm, zinc-plated

Colour:

- RAL 7035

Protection category IP to IEC 60 529:

- IP 55

Protection category NEMA:

- NEMA 12

Supply includes:

- Enclosure frame
- Door
- Door hinged on the right, may be swapped to the left
- Rear panel
- Roof plate
- Gland plates
- Mounting plate
- Lock: 3 mm double-bit
- 2 punched rails 18 x 39 mm

Note:

- For bayed enclosures, the EMC shielding seal is required

EMC enclosure

Width mm	Packs of	800	800	VX25 brochure, page
Height mm		2000	2000	
Depth mm		600	800	
Model No.	1 pc(s).	8807.010	8807.020	
Weight kg		126.8	137.0	

Accessories

Base/plinth corner pieces with base/plinth trim panel, front and rear, 100 mm	2 pc(s)	8620.003	8620.003	85
Base/plinth trim panels, side, 100 mm	2 pc(s)	8620.033	8620.034	86
Base/plinth corner pieces with base/plinth trim panel, front and rear, 200 mm	2 pc(s)	8620.023	8620.023	85
Base/plinth trim panels, side, 200 mm	2 pc(s)	8620.043	8620.044	86
EMC side panels	2 pc(s)	8106.760	8108.760	5 ¹⁾
EMC shielding seal	3 pc(s)	8800.695	8800.695	5 ¹⁾
Divider panel	1 pc(s)	8609.205	8609.206	98
EMC divider panel seal	1 pc(s)	4348.500	4348.500	5 ¹⁾
Rail for EMC shielding bracket	1 pc(s)	2388.850	2388.850	166
EMC shielding bracket		see page	see page	166
EMC shield bus		see page	see page	167
EMC gland plates	1 pc(s)	8618.821	8618.821	5 ¹⁾
EMC earth clamps		see page	see page	167
EMC cable glands		see page	see page	166
Cable duct		see page	see page	186
LED system light		see page	see page	163
Earth strap		see page	see page	169
Earthing braid		see page	see page	169
Comfort handle VX		see page	see page	120

¹⁾ Page of this brochure

EMC gland plates

for VX

For shielded cables with a maximum diameter of 20 mm. Combined EMC/IP seal provides low-resistance contact between cable shield and gland plate. For all 400, 500, 600 and 800 mm deep enclosures in conjunction with standard gland plates.

Material:

- Sheet steel

Surface finish:

- Zinc-plated

Supply includes:

- 1 gland plate with twin hammer-head punching
- 1 sliding base plate
- 2 EMC/IP seals

Width mm	Packs of	Model No.
600	1 pc(s).	8618.820
800	1 pc(s).	8618.821
1000	1 pc(s).	8618.822¹⁾
1200	1 pc(s).	8618.823¹⁾

¹⁾ For one enclosure half only



EMC side panels

for VX

Automatic potential equalisation via assembly components, and a high level of EMC protection thanks to a special EMC seal.

Material:

- Sheet steel, 1.5 mm

Surface finish:

- Magnesium zinc coated, powder-coated on the outside

Colour:

- RAL 7035

Protection category IP to IEC 60 529:

- IP 55

Supply includes:

- Assembly parts

For enclosures		Packs of	Model No.
Height mm	Depth mm		
2000	600	2 pc(s).	8106.760
2000	800	2 pc(s).	8108.760



EMC shielding seal

for VX

For EMC-compliant shielding of the baying point in conjunction with external baying connector.

Protection category IP to IEC 60 529:

- IP 55 in conjunction with external baying connector

Supply includes:

- 6 m

Packs of	Model No.
1 pc(s).	8800.695



Also required:

- External baying connector, see VX25 brochure, page 106



EMC divider panel seal

for VX

With bayed EMC enclosure systems and when using a zinc-plated divider panel, this seal ensures optimum contact and shield attenuation.

Material:

- PU foam with electrically conductive sheathing

Supply includes:

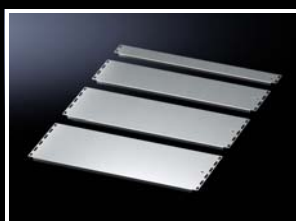
- 6 m

Packs of	Model No.
1 pc(s).	4348.500



System accessories

Base/plinth



Baying cover

for base/plinth system VX

To neatly close the gap between two bayed base/plinths and it is required to close the gap at the rear when baying three or more base/plinths.

Material:

– Plastic ABS, halogen-free

Colour:

– RAL 9005

Note:

– A baying cover is already included as standard with the supply of base/plinth corner pieces with base/plinth trim panels, front and rear.

Packs of	Model No.
10 pc(s).	8620.010
10 pc(s).	8620.011

Gland plate

for VX

For individual configuration of the floor space. Potential equalisation is provided via assembly components and earthing points.

Material:

– Sheet steel

Surface finish:

– Zinc-plated

Supply includes:

– Assembly parts

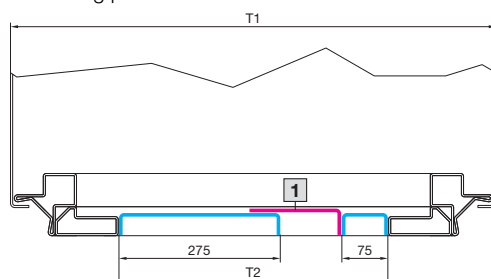
Note:

– At least one sliding plate is required to fully seal a base opening.

Example with enclosure depth 600 mm

T1 (600 mm) - 148 = T2 (452 mm)

1 Sliding plate



+ Accessories:

– Sliding plate, see page 6

For enclosure width 600 mm

Depth mm	Packs of	Model No.
75	1 pc(s).	8001.210
175	1 pc(s).	8001.214
237.5	1 pc(s).	8001.218
275	1 pc(s).	8001.222

For enclosure width 800 mm

Depth mm	Packs of	Model No.
75	1 pc(s).	8001.211
175	1 pc(s).	8001.215
237.5	1 pc(s).	8001.219
275	1 pc(s).	8001.223

For enclosure width 1000 mm

Depth mm	Packs of	Model No.
75	1 pc(s).	8001.212
175	1 pc(s).	8001.216
237.5	1 pc(s).	8001.220
275	1 pc(s).	8001.224

For enclosure width 1200 mm

Depth mm	Packs of	Model No.
75	1 pc(s).	8001.213
175	1 pc(s).	8001.217
237.5	1 pc(s).	8001.221
275	1 pc(s).	8001.225



Sliding plate

for VX

For variable compensation in the base area.

Gland plate depth:

– 65 – 115 mm

Material:

– Sheet steel

Surface finish:

– Zinc-plated

Supply includes:

– Assembly parts

For enclosure width mm	Packs of	Model No.
600	1 pc(s).	8001.239
800	1 pc(s).	8001.241
1000	1 pc(s).	8001.242
1200	1 pc(s).	8001.243

System accessories

Baying/mounting plate

Quick-fit baying clamps

- For all-round installation on the baying point
- May be flexibly positioned to avoid collisions with installed equipment
- Simply tighten the screws, tap in the quick-fit baying clamp, pull the enclosures together and secure
- Additional mounting level between bayed enclosures, e.g. for mounting cable ducts

Material:

- Sheet steel

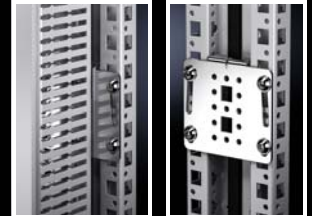
Surface finish:

- Zinc-plated

Supply includes:

- Assembly parts

Packs of	Model No.
6 pc(s).	8617.506



Baying seal

May be used individually for baying on all existing enclosure sizes. The seal sits securely all around the section edge, and is easily removed at any time without leaving any residues. It is also reusable.

Packs of	Model No.
1 pc(s).	8617.507

Material:

- EPDM

Supply includes:

- 8 m



Partial mounting plate holder

for partial mounting plate VX

The partial mounting plate may be fitted set back by 20 mm behind the enclosure frame using the partial mounting plate holder, and also fastened directly to the frame from the outside. The partial mounting plate is also removable from the inside for servicing.

Material:

- Sheet steel

Surface finish:

- Zinc-plated, passivated

Supply includes:

- Assembly parts

Packs of	Model No.
4 pc(s).	8617.655



System accessories



System accessories

Partial assembly plate

Partial assembly plate

for VX

To accommodate additional components inside the enclosure. Partial assembly plates are extremely versatile, providing a platform for a diverse range of applications. They are attached directly to the enclosure section. For individual interior installation, system punchings are additionally provided in the edge fold.

Material:

– Sheet steel, 1.5 mm

Surface finish:

– Zinc-plated

Supply includes:

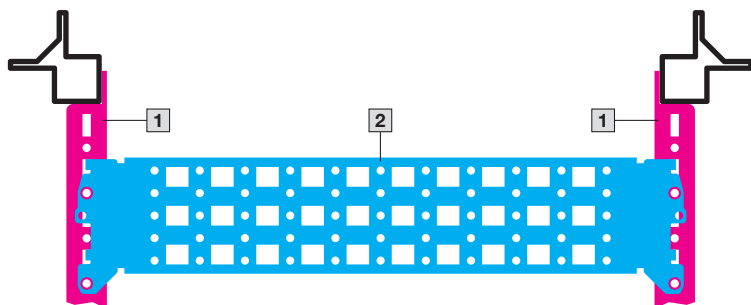
– Assembly parts

Dimensions mm	Packs of	Model No.
500 x 400	1 pc(s).	8617.660
500 x 600	1 pc(s).	8617.661
600 x 400	1 pc(s).	8617.662
600 x 600	1 pc(s).	8617.663
800 x 400	1 pc(s).	8617.664
800 x 600	1 pc(s).	8617.665

Outer mounting level



Inner mounting level



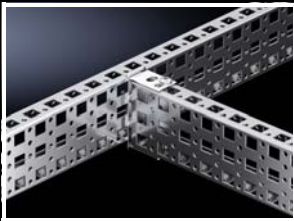
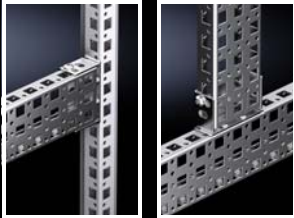
1 Partial assembly plate

2 Punched section with mounting flange, 23 x 64 mm



System accessories

Interior installation



Punched section without mounting flanges, 23 x 64 mm

For variable, individual interior installation of the enclosure frame on the inner mounting level. Mounted flush with enclosure frame. The additional mounting brackets mean it can also be used with a pre-installed mounting plate, and is also prepared for cutting to any required length. System punchings on all four sides. With slots at the top and bottom for cage nuts, for attaching your own components via metric screws.

Installation options:

- On the inner mounting level, on the enclosure section
- Upright or flat between two punched sections on the inner mounting level

Material:

- Sheet steel

Surface finish:

- Zinc-plated

Supply includes:

- 1 pack =
 - 2 punched sections without mounting flanges 23 x 64 mm
 - 4 mounting brackets

For enclosure width/height/depth mm	Packs of	Model No.
400	2 pc(s).	8100.740
500	2 pc(s).	8100.741
600	2 pc(s).	8100.742
800	2 pc(s).	8100.743

Slide rail VX

for adaptor section 482.6 mm (19") with attachment on both sides

Mounting between the 482.6 mm (19") front and rear adaptor sections or 482.6 mm (19") adaptor pieces.

Material:

- Sheet steel

Surface finish:

- Zinc-plated

Supply includes:

- Assembly parts

For enclosure depth mm	Packs of	Model No.
500	10 pc(s).	8613.151
600	10 pc(s).	8613.161
800	10 pc(s).	8613.181

Slide rail VX

for adaptor section 482.6 mm (19") with attachment on one side

Mounting on the adaptor section, 482.6 mm (19").

Material:

- Sheet steel

Surface finish:

- Zinc-plated

Supply includes:

- Assembly parts

Length mm	Packs of	Model No.
270	10 pc(s).	4531.001

System accessories

Interior installation

Door stay VX

To secure the door in the open position. May be fitted directly without any further machining of the enclosure frame or door.

The space-saving design does not obstruct the installed equipment in the enclosure and door.

Supply includes:

- Assembly parts

Packs of	Model No.
1 pc(s).	8618.430



Socket

- For mounting on support rails TS 35/7.5 and TS 35/15 to EN 60 715
- Uniform screw terminals from one side
- Enclosure width 45 mm

Technical specifications:

- Rated voltage: 250 V
- Rated current: 16 A

Material:

- Polyamide

Colour:

- Grey

Approvals:

- VDE

Type	Packs of	Model No.
Earthing-pin/CEE 7/3	2 pc(s).	2506.120



Paint

For touching up and repairing powder-coated and wet-painted surfaces, air-drying.

	Colour RAL	Model No.
Spray can 150 ml	9005	2440.905



Rittal – The System.

Faster – better – everywhere.

- Enclosures
- Power Distribution
- Climate Control
- IT Infrastructure
- Software & Services

You can find the contact details of all Rittal companies throughout the world here.



www.rittal.com/contact

XWWW00190EN1904

ENCLOSURES

POWER DISTRIBUTION

CLIMATE CONTROL

IT INFRASTRUCTURE

SOFTWARE & SERVICES



FRIEDHELM LOH GROUP