

# Niloé™ Step



SWITCH UP YOUR EVERYDAY

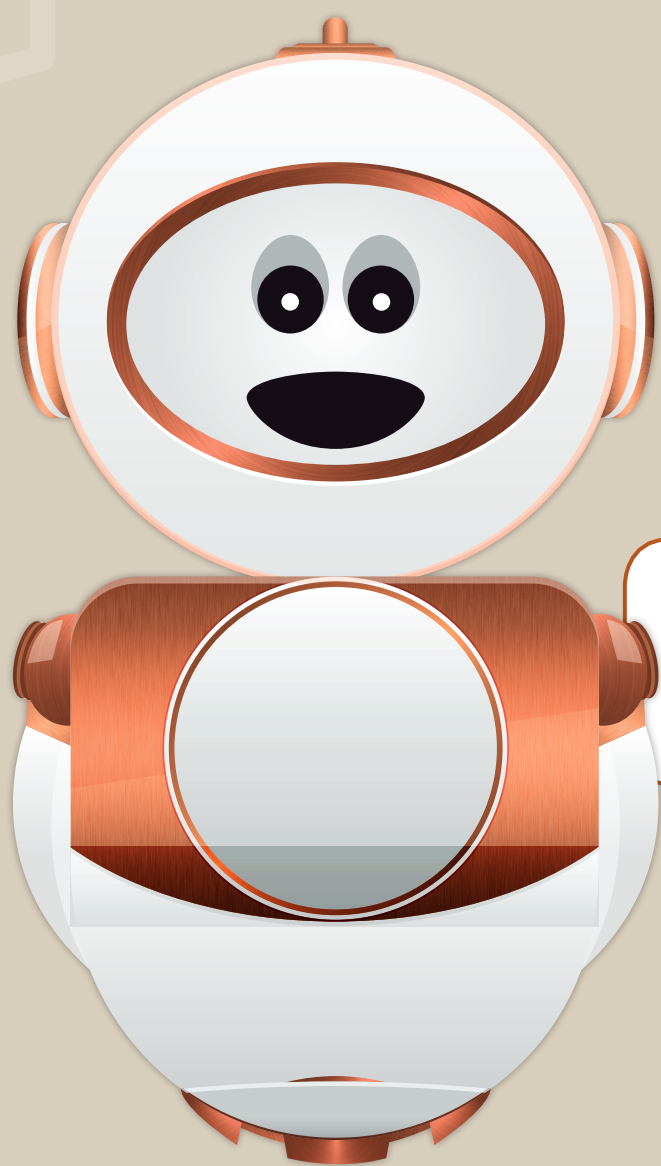
CATALOGUE  
PAGES  
→ INSIDE

THE **GLOBAL SPECIALIST**  
IN ELECTRICAL AND DIGITAL BUILDING INFRASTRUCTURES

 **legrand**®

# A CLASSIC REVAMPED

More modern, more contemporary, more good looking. With a refreshed look and finishes that blend with any decoration, the new **Niloé<sup>Step</sup>** range provides the perfect wiring devices for you.



Discover the many reasons to love **Niloé<sup>Step</sup>**!



## A brand new contemporary look with square edges

The profile of each switch has been given a slimmer, sleeker look.  
The result is a range that blends form with functionality.

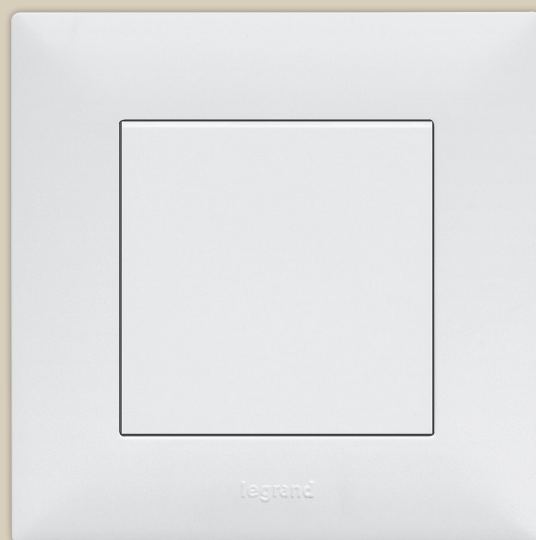
# EXPERIENCE THE POSSIBILITIES

## Colours and Finishes

Simple in style, pleasing to the eye.  
Customize your switches to suit  
your taste. Every finish blends in  
seamlessly to your interior.

### Play with full colour

With 4 full colours to choose  
from, the choice is in your hands.

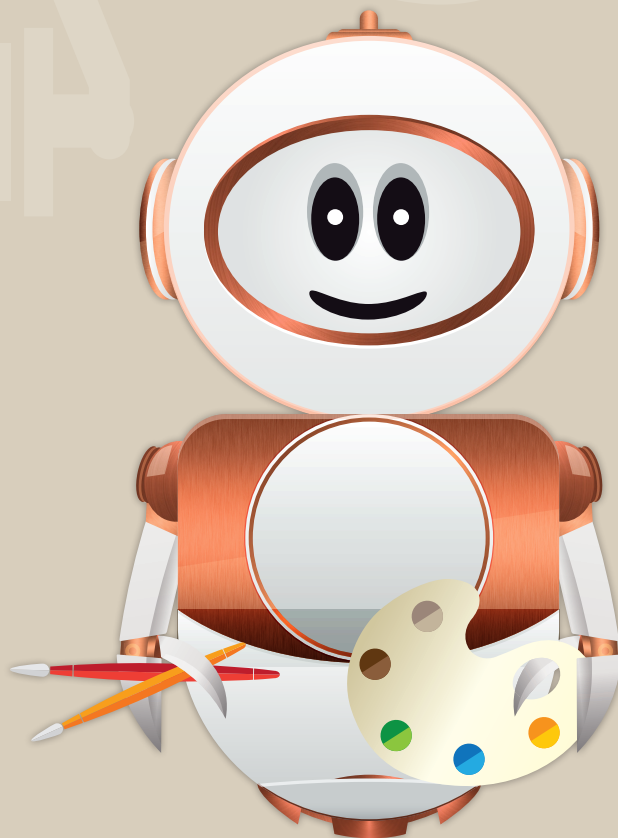


Matt White



Aluminium





Medium Grey



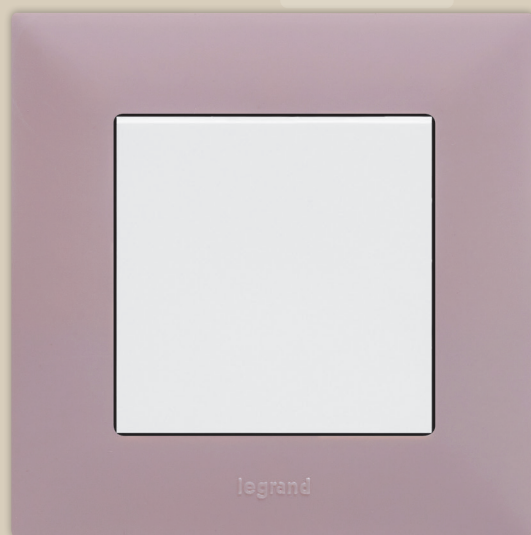
Matt Black

# ADD A TOUCH OF STYLE

Whoever you are, whatever your taste. When it comes to interior, even the smallest details matter. Each finish in the **Niloé<sup>Step</sup>** range is designed to elevate the aesthetics of your home.



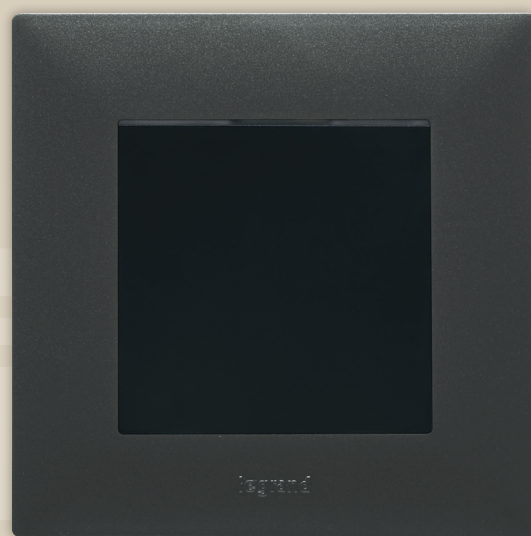
Atoll



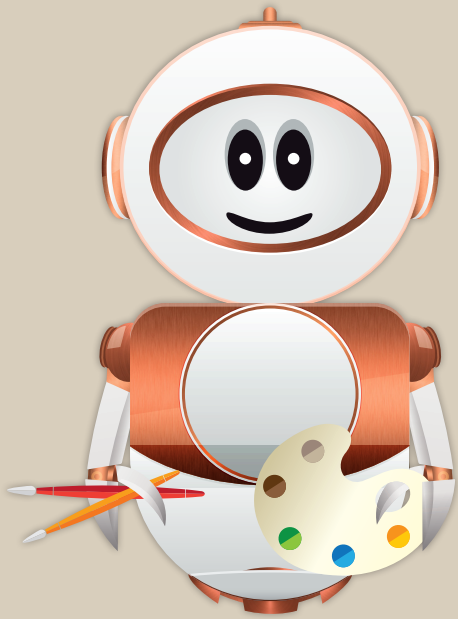
Old Pink



Pearl



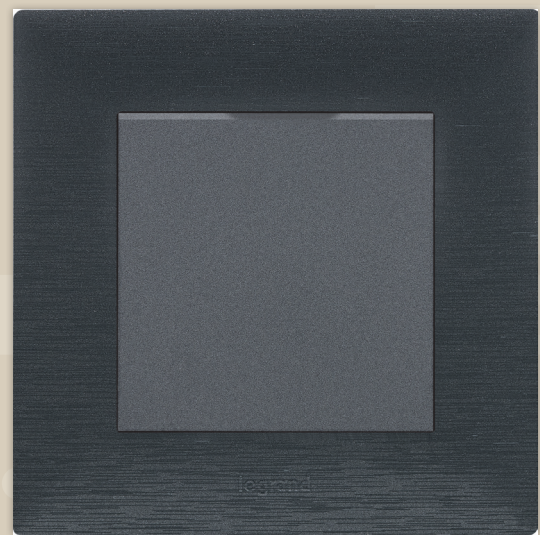
Dark Grey



Why settle for the usual finishing? Now you can bring the latest trends into your home and make it truly unique.



Brushed Aluminium



Brushed Medium Grey

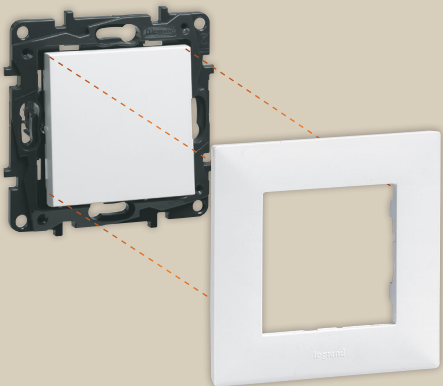
# KEEP THINGS EASY

## Fuss-free installation

Easy installation, quick fixing. A new mechanism has made installation an effortless process.

## Enjoy freedom of choice

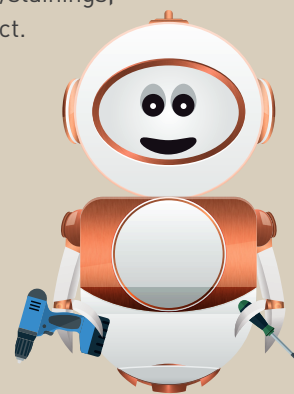
Easy installation: just 2 codes to create a complete product.



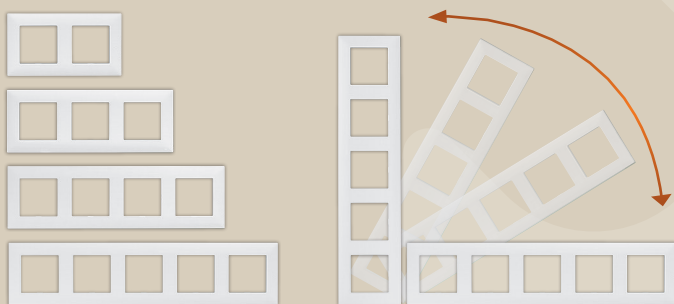
## Be spotlessly clean

Dust protection cover saves the mechanism during the installation period against the paintings, dust/stainings, and assures a good functionality to the product.

To be ordered separately.



## Multi-Gang

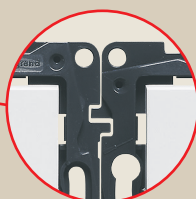
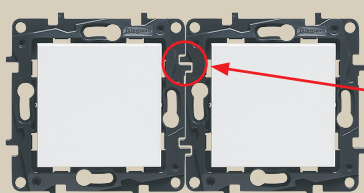


### Reversible Multi-Gang

Up to 5 gangs, same plate to use horizontally and vertically.



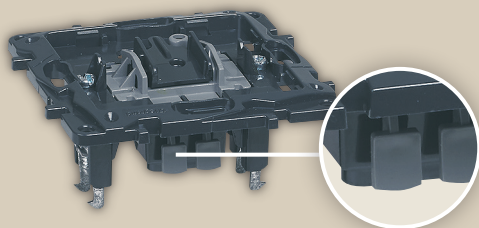
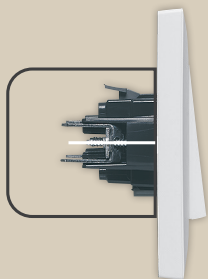
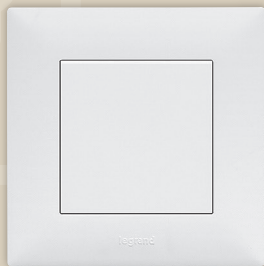
Thickness of the plastic support allows the bubble meter to be put on it easily.



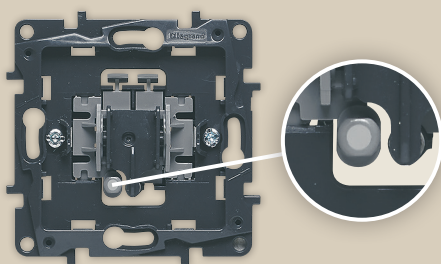
Due to the interlocking grid system, multi-gang installation is quick and easy.



## Controls



Automatic terminals on control and sockets mechanisms. Quick and easy installation. Wide release keys for easier and more comfortable manipulation.



Controls are also available in illuminated version. LED light inside the product.

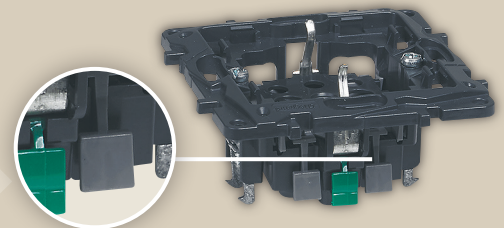
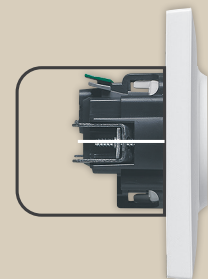
**Easy and fast** installation: finishes are clipped on the support frames without tools.

**More comfort** during the installation: mechanisms take up less space, making them easier to install and adjust in the box.

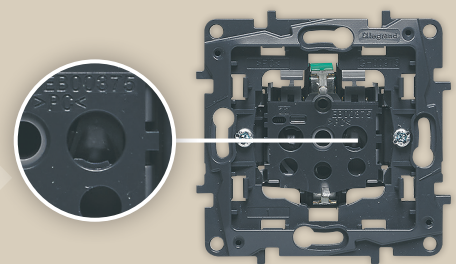
**Always in safety** rigid insulated plastic support. New claws for greater tensile resistance.

**IP2X protection** for totally safe installation.

## Sockets



Sockets with automatic or screw terminals in the range. Cover is clipped without tool quickly and easily, no screw in the middle.



Safety shutter system on all sockets.



# ALWAYS STAY CONNECTED

## Energy Distribution

Wide offer, reliable choice. **Niloé<sup>Step</sup>** comes with a complete range of sockets. Not only does that keep you connected to power, you are also connected to the world.



USB Type C Double Socket

### Charge one or multiple devices

From a single USB receptacle, recharge fast your smartphone, tablet, laptop or e-reader simultaneously at any one time.



Wireless Charger

Just put the smartphone down on the support. No cable needed.



USB Type A+C  
Double Socket



2P+E / USB Type C Mixed Socket

Ideal for replacing an existing socket without additional works on cabling or wall engraving

### Compact solutions save more space in your home



2P+E Socket  
German standard



2P Socket



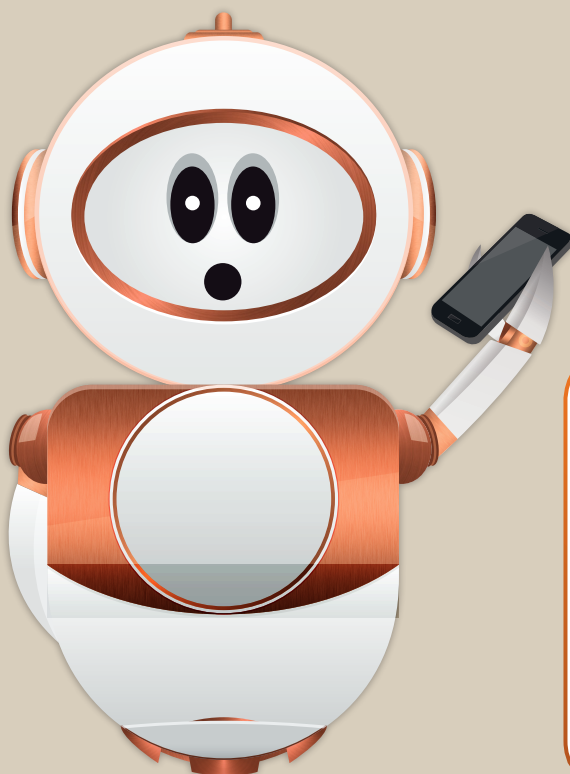
2P+E Socket  
French standard



2P+E Socket with Flap



Double 2P+E Socket



**Hello...**

Do you spend a lot of time on your smartphone? Flat batteries will no longer be a hassle! **Niloé<sup>Step</sup>** is a fast and convenient solution for charging all your devices. Take calls or surf the Internet without a worry!

# MEET YOUR NEEDS

## More Controls

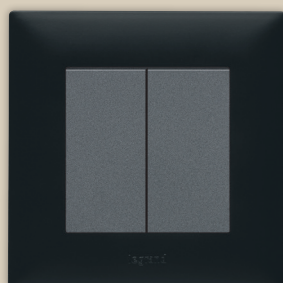
Enhanced functionality, improved convenience. A whole spectrum of controls accommodates any requirement. Now enjoy greater comfort, safety and energy saving.

## Management of all light sources results in greater energy saving

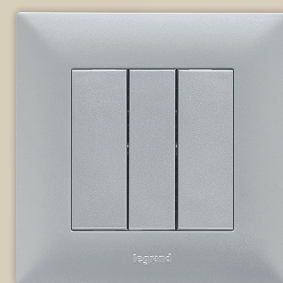
Saving energy and the costs that come with it is possible. Control your lighting system efficiently with universal dimmers and automatic switches.



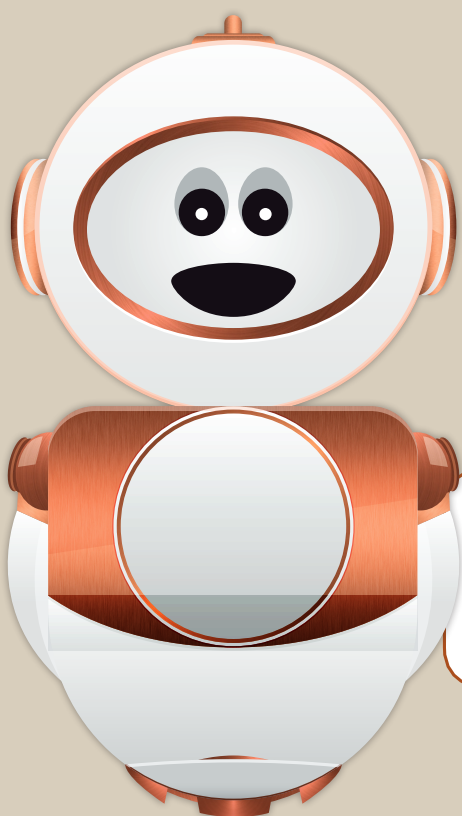
Simple Switches



Double Switches



Triple Switches

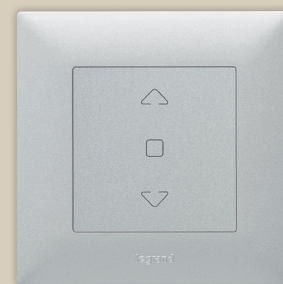


Push-Buttons



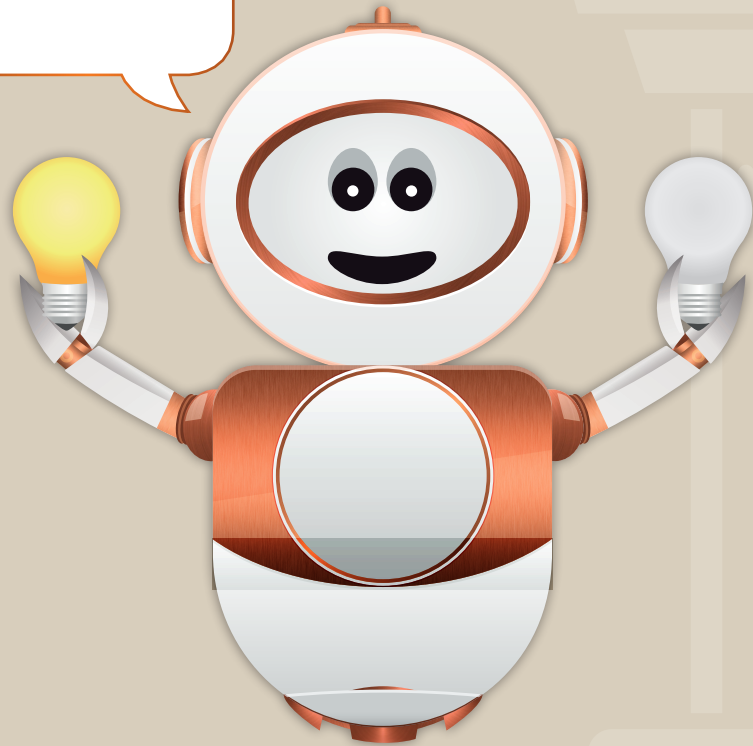
Illuminated or Indicator Switches

LED technology ensures high reliability, long life and energy saving.



Roller Blind Push-Button

Our wide range of lighting controls ensure just the right amount of light, exactly when you need it!



**Skirting Light with Motion Sensor**

Lights up the path automatically when somebody is passing.

**Create the perfect ambience**

From very dim, to moon-glow to full brightness, adjust your lighting to your desired setting.



**Motion Sensor  
2 Wires All Loads**

To manage lighting without waste.



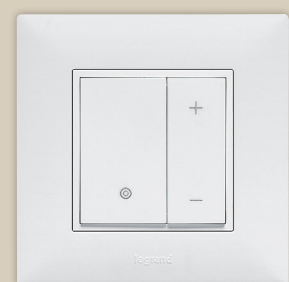
**Floor Heating Thermostat**

To control the room temperature.



**Rotary Dimmer**

To control and adjust all types of loads, LED and CFL included.



**Push Dimmer**

To control and adjust all types of loads, LED and CFL included.

# POWER UP DEVICES

## Multimedia Sockets

Diverse offering, freedom to enjoy. Sound and audio are part of daily life. With a variety of multimedia sockets, **Niloé<sup>Step</sup>** ensures entertainment is always at your fingertips.



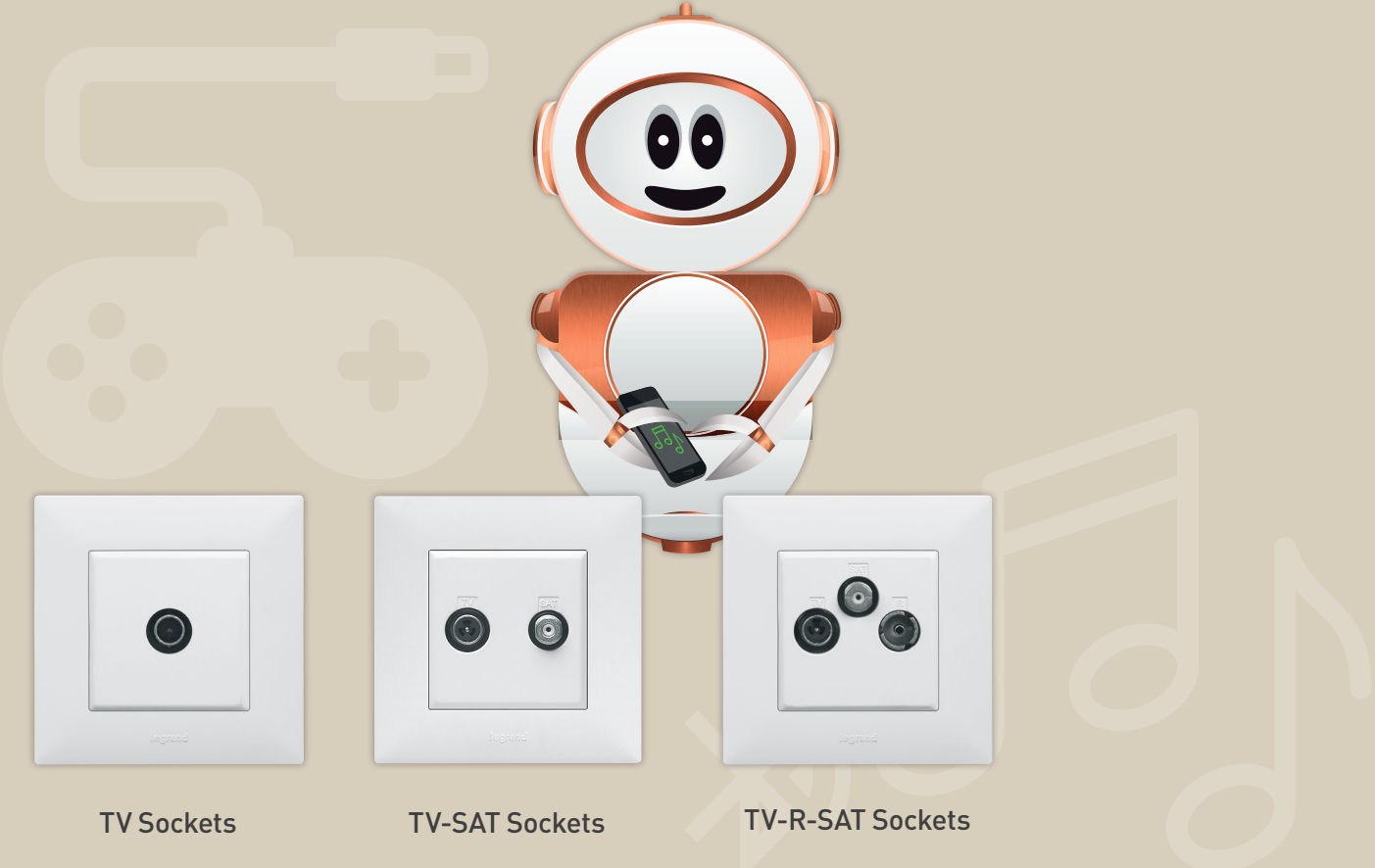
Fiber Optic Socket  
SC/APC



Double Loudspeaker  
Socket



Wide range of single and double RJ45 sockets



TV Sockets

TV-SAT Sockets

TV-R-SAT Sockets



# PROTECT AGAINST ELEMENTS

## Weatherproof Devices

Rain or shine, humid or arid. **Niloé<sup>Step</sup>** products function against all kinds of conditions. No matter the weather, there's a solution for you.

### IP44 Range

Our switches are IP44 rated, suited for use in bathrooms, kitchens and laundry rooms.

Waterproof on the inside, attractive on the outside. Explore the IP44 range.



Cable Outlet

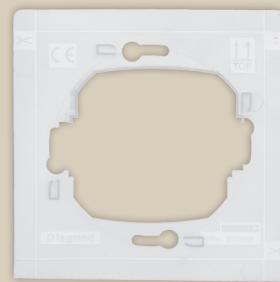


2P+E socket with Flap

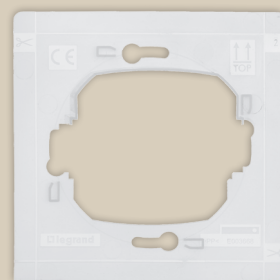


1-Gang Plate IP44

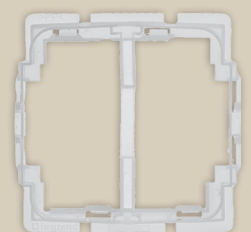
Normal switches and push-buttons can be changed to IP44 waterproof version, simply adding the IP44 kit to the products (to be ordered separately)



+



+



# Niloé™ Step

## switches and push-buttons



8 631 01 + 8 631 91



8 631 05 + 8 631 91

Mechanisms supplied with support frames and cover plates  
To be equipped with plates (p. 24)  
Fixing with claws (supplied) or screws

### Pack Cat.Nos One-way switches - 10 AX - 250 V~

Pack	Cat.Nos	1-gang Automatic terminals	1-gang illuminated Automatic terminals	2-gang Automatic terminals	2-gang illuminated Automatic terminals	3-gang Screw terminals
10	8 631 01	<ul style="list-style-type: none"> <li>○ White</li> <li>● Aluminium</li> <li>● Medium grey</li> <li>● Black</li> </ul>	<ul style="list-style-type: none"> <li>○ White</li> <li>● Aluminium</li> <li>● Medium grey</li> <li>● Black</li> </ul>	<ul style="list-style-type: none"> <li>○ White</li> <li>● Aluminium</li> <li>● Medium grey</li> <li>● Black</li> </ul>	<ul style="list-style-type: none"> <li>○ White</li> <li>● Aluminium</li> <li>● Medium grey</li> <li>● Black</li> </ul>	<ul style="list-style-type: none"> <li>○ White</li> <li>● Aluminium</li> <li>● Medium grey</li> <li>● Black</li> </ul>
10	8 633 01					
10	8 634 01					
10	8 635 01					
5	8 631 11	<ul style="list-style-type: none"> <li>○ White</li> <li>● Aluminium</li> <li>● Medium grey</li> <li>● Black</li> </ul>	<ul style="list-style-type: none"> <li>○ White</li> <li>● Aluminium</li> <li>● Medium grey</li> <li>● Black</li> </ul>	<ul style="list-style-type: none"> <li>○ White</li> <li>● Aluminium</li> <li>● Medium grey</li> <li>● Black</li> </ul>	<ul style="list-style-type: none"> <li>○ White</li> <li>● Aluminium</li> <li>● Medium grey</li> <li>● Black</li> </ul>	<ul style="list-style-type: none"> <li>○ White</li> <li>● Aluminium</li> <li>● Medium grey</li> <li>● Black</li> </ul>
5	8 633 11					
5	8 634 11					
5	8 635 11					
10	8 631 05	<ul style="list-style-type: none"> <li>○ White</li> <li>● Aluminium</li> <li>● Medium grey</li> <li>● Black</li> </ul>	<ul style="list-style-type: none"> <li>○ White</li> <li>● Aluminium</li> <li>● Medium grey</li> <li>● Black</li> </ul>	<ul style="list-style-type: none"> <li>○ White</li> <li>● Aluminium</li> <li>● Medium grey</li> <li>● Black</li> </ul>	<ul style="list-style-type: none"> <li>○ White</li> <li>● Aluminium</li> <li>● Medium grey</li> <li>● Black</li> </ul>	<ul style="list-style-type: none"> <li>○ White</li> <li>● Aluminium</li> <li>● Medium grey</li> <li>● Black</li> </ul>
10	8 633 05					
10	8 634 05					
10	8 635 05					
5	8 631 15	<ul style="list-style-type: none"> <li>○ White</li> <li>● Aluminium</li> <li>● Medium grey</li> <li>● Black</li> </ul>	<ul style="list-style-type: none"> <li>○ White</li> <li>● Aluminium</li> <li>● Medium grey</li> <li>● Black</li> </ul>	<ul style="list-style-type: none"> <li>○ White</li> <li>● Aluminium</li> <li>● Medium grey</li> <li>● Black</li> </ul>	<ul style="list-style-type: none"> <li>○ White</li> <li>● Aluminium</li> <li>● Medium grey</li> <li>● Black</li> </ul>	<ul style="list-style-type: none"> <li>○ White</li> <li>● Aluminium</li> <li>● Medium grey</li> <li>● Black</li> </ul>
5	8 633 15					
5	8 634 15					
5	8 635 15					
5	8 631 03	<ul style="list-style-type: none"> <li>○ White</li> <li>● Aluminium</li> <li>● Medium grey</li> <li>● Black</li> </ul>	<ul style="list-style-type: none"> <li>○ White</li> <li>● Aluminium</li> <li>● Medium grey</li> <li>● Black</li> </ul>	<ul style="list-style-type: none"> <li>○ White</li> <li>● Aluminium</li> <li>● Medium grey</li> <li>● Black</li> </ul>	<ul style="list-style-type: none"> <li>○ White</li> <li>● Aluminium</li> <li>● Medium grey</li> <li>● Black</li> </ul>	<ul style="list-style-type: none"> <li>○ White</li> <li>● Aluminium</li> <li>● Medium grey</li> <li>● Black</li> </ul>
5	8 633 03					
5	8 634 03					
5	8 635 03					

### Pack Cat.Nos Two-way switches - 10 AX - 250 V~

Pack	Cat.Nos	1-gang Automatic terminals	1-gang illuminated Automatic terminals
10	8 631 06	<ul style="list-style-type: none"> <li>○ White</li> <li>● Aluminium</li> <li>● Medium grey</li> <li>● Black</li> </ul>	<ul style="list-style-type: none"> <li>○ White</li> <li>● Aluminium</li> <li>● Medium grey</li> <li>● Black</li> </ul>
10	8 633 06		
10	8 634 06		
10	8 635 06		
5	8 631 16	<ul style="list-style-type: none"> <li>○ White</li> <li>● Aluminium</li> <li>● Medium grey</li> <li>● Black</li> </ul>	<ul style="list-style-type: none"> <li>○ White</li> <li>● Aluminium</li> <li>● Medium grey</li> <li>● Black</li> </ul>
5	8 633 16		
5	8 634 16		
5	8 635 16		

### Pack Cat.Nos Two-way switches - 10 AX - 250 V~ (continued)

Pack	Cat.Nos	2-gang Automatic terminals	2-gang illuminated Automatic terminals
10	8 631 08	<ul style="list-style-type: none"> <li>○ White</li> <li>● Aluminium</li> <li>● Medium grey</li> <li>● Black</li> </ul>	<ul style="list-style-type: none"> <li>○ White</li> <li>● Aluminium</li> <li>● Medium grey</li> <li>● Black</li> </ul>
10	8 633 08		
10	8 634 08		
10	8 635 08		
5	8 631 18	<ul style="list-style-type: none"> <li>○ White</li> <li>● Aluminium</li> <li>● Medium grey</li> <li>● Black</li> </ul>	<ul style="list-style-type: none"> <li>○ White</li> <li>● Aluminium</li> <li>● Medium grey</li> <li>● Black</li> </ul>
5	8 633 18		
5	8 634 18		
5	8 635 18		

### Pack Cat.Nos Intermediate switch - 10 AX - 250 V~

Pack	Cat.Nos	Screw terminals
5	8 631 07	<ul style="list-style-type: none"> <li>○ White</li> <li>● Aluminium</li> <li>● Medium grey</li> <li>● Black</li> </ul>
5	8 633 07	
5	8 634 07	
5	8 635 07	

### Accessory kits to create IP44 switches/ push-buttons

The kit transforms IP2X commands to IP44  
Can be used with all single or double commands  
IP44 accessory for single commands  
IP44 accessory for double commands

### Pack Cat.Nos Push-buttons - 6 A - 250 V~

Pack	Cat.Nos	1-gang Automatic terminals	1-gang illuminated with bell symbol Automatic terminals	2-gang Automatic terminals
10	8 631 09	<ul style="list-style-type: none"> <li>○ White</li> <li>● Aluminium</li> <li>● Medium grey</li> <li>● Black</li> </ul>	<ul style="list-style-type: none"> <li>○ White</li> <li>● Aluminium</li> <li>● Medium grey</li> <li>● Black</li> </ul>	<ul style="list-style-type: none"> <li>○ White</li> <li>● Aluminium</li> <li>● Medium grey</li> <li>● Black</li> </ul>
10	8 633 09			
10	8 634 09			
10	8 635 09			
5	8 631 10	<ul style="list-style-type: none"> <li>○ White</li> <li>● Aluminium</li> <li>● Medium grey</li> <li>● Black</li> </ul>	<ul style="list-style-type: none"> <li>○ White</li> <li>● Aluminium</li> <li>● Medium grey</li> <li>● Black</li> </ul>	<ul style="list-style-type: none"> <li>○ White</li> <li>● Aluminium</li> <li>● Medium grey</li> <li>● Black</li> </ul>
5	8 633 10			
5	8 634 10			
5	8 635 10			
5	8 631 12	<ul style="list-style-type: none"> <li>○ White</li> <li>● Aluminium</li> <li>● Medium grey</li> <li>● Black</li> </ul>	<ul style="list-style-type: none"> <li>○ White</li> <li>● Aluminium</li> <li>● Medium grey</li> <li>● Black</li> </ul>	<ul style="list-style-type: none"> <li>○ White</li> <li>● Aluminium</li> <li>● Medium grey</li> <li>● Black</li> </ul>
5	8 633 12			
5	8 634 12			
5	8 635 12			

## Niloé™ Step

roller blind controls, ventilation control and keycard switches


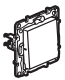





8 634 45 + 8 634 91



8 635 46 + 8 635 91

Mechanisms supplied with support frames and cover plates  
To be equipped with plates (p. 24)  
Fixing with claws (supplied) or screws

Pack	Cat.Nos	Roller blind controls
		Automatic terminals
		<b>Roller blind switch - 6 AX - 250 V~</b> 3 positions: up, down, stop
5	8 631 44	 ○ White
5	8 633 44	● Aluminium
5	8 634 44	● Medium grey
5	8 635 44	● Black
		<b>Roller blind push-button - 6 A - 250 V~</b> 2 positions: up, down
5	8 631 43	 ○ White
5	8 633 43	● Aluminium
5	8 634 43	● Medium grey
5	8 635 43	● Black
		<b>Ventilation control switch (0, 1, 2, 3)</b>
		Screw terminals AC 23 A 2.5 kW, AC 21 A 20 A
1	8 631 45	 ○ White
1	8 633 45	● Aluminium
1	8 634 45	● Medium grey
1	8 635 45	● Black
		<b>Keycard switches</b>
		For energizing a circuit by inserting a card Example of use: hotel room power supply only when the guest is present To be used with the card Cat.No 0 898 06 Card width max. 54 mm. Card not supplied
		<b>Mechanical keycard switch</b> Automatic terminals Mechanism without time delay after card removal
1	8 631 46	 ○ White
1	8 633 46	● Aluminium
1	8 634 46	● Medium grey
1	8 635 46	● Black
		<b>Electronic card-operated switch</b> Screw terminals Mechanism with 30s time delay after card removal 230 VA, 50/60 Hz
1	8 631 47	 ○ White
1	8 633 47	● Aluminium
1	8 634 47	● Medium grey
1	8 635 47	● Black

## Niloé™ Step

dimmers


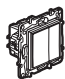


8 633 52 + 8 633 91



8 631 53 + 8 631 91

Mechanisms supplied with support frames and cover plates  
To be equipped with plates (p. 24)  
Fixing with claws (supplied) or screws

Pack	Cat.Nos	Dimmers 240 V~ - 50 Hz
		<b>Rotary dimmer without neutral</b> Allows the control and dimming of: - 5 to 300 W incandescent lamps and 230 V± halogen lamps - 5 to 300 V± ELV halogen bulbs with ferromagnetic transformer via electronic transformer Can be installed as a replacement for a traditional switch
		Screw terminals
1	8 631 52	 ○ White
1	8 633 52	● Aluminium
1	8 634 52	● Medium grey
1	8 635 52	● Black
		<b>Push-button dimmer without neutral</b> For all types of lamps: - dimmable LEDs: 3 W to 75 W (10 lamps max.) - dimmable compact fluorescent lamps: 3 W to 75 W (10 lamps max.) - halogen with ferromagnetic or electronic transformer: 3 VA to 400 VA - fluorescent tube - ballast: 3 VA to 200 VA - halogen and incandescent 240 VA: 3 W to 400 W When switched on, gradually (2 seconds) lights up at the level set before last switch-off Functioning: - dimming mode - pre-set level mode (0%, 33%, 66%, 100%) - nightlight mode: dimming down of the lamp for 1 hour Equipped with overvoltage and short-circuit protection
		Screw terminals
1	8 631 53	 ○ White
1	8 633 53	● Aluminium
1	8 634 53	● Medium grey
1	8 635 53	● Black

# Niloé™ Step

## motion sensors and skirting light with motion sensor

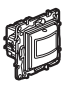
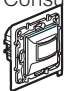
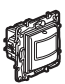



8 634 48 + 8 634 91



8 633 51 + 8 633 91

Mechanisms supplied with support frames and cover plates  
To be equipped with plates (p. 24)  
Fixing with claws (supplied) or screws

Pack	Cat.Nos	Motion sensors
		<p>All sensors are compatible with any type of lamp IR detection. Detection field 120° Detection range 8 m Integrated self-protection against overloads and short-circuits Screw terminals Time delay adjustable from 10 s to 10 min Light level threshold adjustable from 5 to 1275 lux</p> <p><b>Motion sensor without neutral</b> Allows the control of: - 3 to 100 W LED and compact fluorescent lamps, - 3 to 250 VA LED, CFL, halogen and fluorescent tubes with ferromagnetic or electronic ballast - 3 to 250 W halogen (230 V) and incandescent lamps If several sensors are installed on the same circuit, the minimum load changes: refer to the technical sheet Possibility to install up to 3 sensors in parallel Consumption on standby: 0.02 W</p>
1	8 631 48	 <ul style="list-style-type: none"> <li>○ White</li> <li>● Aluminium</li> <li>● Medium grey</li> <li>● Black</li> </ul>
1	8 633 48	
1	8 634 48	
1	8 635 48	
		<p><b>Motion sensor without neutral IP44</b> Allows the control of: - 3 to 100 W LED and compact fluorescent lamps, - 3 to 250 VA LED, CFL, halogen and fluorescent tubes with ferromagnetic or electronic ballast - 3 to 250 W halogen (230 V) and incandescent lamps If several sensors are installed on the same circuit, the minimum load changes: refer to the technical sheet Possibility to install up to 3 sensors in parallel Consumption on standby: 0.02 W</p>
1	8 631 50	 <ul style="list-style-type: none"> <li>○ White</li> <li>● Aluminium</li> <li>● Medium grey</li> <li>● Black</li> </ul>
1	8 633 50	
1	8 634 50	
1	8 635 50	
		<p><b>Motion sensor with neutral</b> Allows the control of: - LEDs: 0 to 50 W - compact fluorescent: 0 to 50 W - LEDs, CFLs, Halogen with ferromagnetic or electronic ballast: 0 to 200 VA - fluorescent tubes with ferromagnetic or electronic ballast: 0 to 150 VA - 230 VA halogen, incandescent: 0 to 400 W No remote manual control with push-button Standby consumption: 0.55 W</p>
1	8 631 49	 <ul style="list-style-type: none"> <li>○ White</li> <li>● Aluminium</li> <li>● Medium grey</li> <li>● Black</li> </ul>
1	8 633 49	
1	8 634 49	
1	8 635 49	

Pack	Cat.Nos	Skirting light with motion sensor
		<p>When someone passes it, the mechanism detects movement and lights the passage Detection field 180°. Detection range 6 m LED lighting The function has a disengageable audible signal Screw terminals</p>
1	8 631 51	 <ul style="list-style-type: none"> <li>○ White</li> <li>● Aluminium</li> <li>● Medium grey</li> <li>● Black</li> </ul>
1	8 633 51	
1	8 634 51	
1	8 635 51	

# Niloé™ Step

## socket outlets



8 631 20 + 8 631 91



8 635 22 + 8 635 91



8 633 33 + 8 633 91

Mechanisms supplied with support frames and cover plates  
To be equipped with plates (p. 24)  
Fixing with claws (supplied) or screws

### Pack Cat.Nos 2P socket outlets 16 A - 250 V~

With child protection shutters

Pack	Cat.Nos	2P - screw terminals
10	8 631 19	○ White
10	8 633 19	● Aluminium
10	8 634 19	● Medium grey
10	8 635 19	● Black

### German standard socket outlets 16 A - 250 V~

2P+E - automatic terminals

With child protection shutters

10	8 631 20	○ White
10	8 633 20	● Aluminium
10	8 634 20	● Medium grey
10	8 635 20	● Black

2P+E - screw terminals

10	8 631 21	○ White
10	8 633 21	● Aluminium
10	8 634 21	● Medium grey
10	8 635 21	● Black

2P+E - IP44 - automatic terminals

With child protection shutters

10	8 631 23	○ White
5	8 633 23	● Aluminium
5	8 634 23	● Medium grey
5	8 635 23	● Black

2 x 2P+E - automatic terminals

With child protection shutters

5	8 631 22	○ White
5	8 633 22	● Aluminium
5	8 634 22	● Medium grey
5	8 635 22	● Black

### French standard socket outlets 16 A - 250 V~

2P+E - automatic terminals

10	8 631 31	○ White
10	8 633 31	● Aluminium
10	8 634 31	● Medium grey
10	8 635 31	● Black

2P+E - with child protection shutters - automatic terminals

10	8 631 33	○ White
10	8 633 33	● Aluminium
10	8 634 33	● Medium grey
10	8 635 33	● Black

### Pack Cat.Nos French standard socket outlets 16 A - 250 V~ (continued)

2P+E - IP44 - with child protection shutters - automatic terminals

10	8 631 36	○ White
10	8 633 36	● Aluminium
10	8 634 36	● Medium grey
10	8 635 36	● Black

2P+E - screw terminals

10	8 631 30	○ White
10	8 633 30	● Aluminium
10	8 634 30	● Medium grey
10	8 635 30	● Black

2P+E - IP44 - screw terminals

10	8 631 35	○ White
10	8 633 35	● Aluminium
10	8 634 35	● Medium grey
10	8 635 35	● Black

2P+E - with child protection shutters - screw terminals

10	8 630 30	● Red
10	8 630 31	● Red tamperproof

2 x 2P+E (specific czech) - screw terminals

5	8 631 37	○ White
5	8 633 37	● Aluminium
5	8 634 37	● Medium grey
5	8 635 37	● Black

2 x 2P+E (specific czech) - with child protection shutters - screw terminals

5	8 631 27	○ White
5	8 633 27	● Aluminium
5	8 634 27	● Medium grey
5	8 635 27	● Black

2 x 2P+E (specific polish) - screw terminals

Can be installed in multigang plate

10	8 631 32	○ White
10	8 633 32	● Aluminium
10	8 634 32	● Medium grey
10	8 635 32	● Black

2 x 2P+E (specific polish) - with child protection shutters - screw terminals

Can be installed in multigang plate

10	8 631 34	○ White
10	8 633 34	● Aluminium
10	8 634 34	● Medium grey
10	8 635 34	● Black



# Niloé™ Step

## USB charging sockets



Mechanisms supplied with support frames and cover plates  
To be equipped with plates (p. 24)  
Fixing with claws (supplied) or screws

Pack	Cat.Nos	USB charging sockets
1	8 631 38	<b>2P+E 16 A + USB Type C 1.5 A</b> For a quick charging of tablets, smartphones, MP3 players, watches, etc. To replace a traditional 2P+E socket without changing the wiring or the existing box Consumption in passive mode < 0.07 W class II SELV Supplied with cover plate Automatic terminals, with child protection shutters <b>2P+E French standard flush socket outlet with USB Type C charger</b> ○ White ● Aluminium ● Medium grey ● Black
1	8 633 38	
1	8 634 38	
1	8 635 38	
1	8 631 26	<b>2P+E German standard socket outlet with USB Type C charger</b> ○ White ● Aluminium ● Medium grey ● Black
1	8 633 26	
1	8 634 26	
1	8 635 26	
1	8 631 39	<b>Double USB charging socket Type C+C</b> 5 V, 3 A, 15 W For smartphones and fast charging tablet PC Conform to IEC 62680-1-3 Certified USB-IF Surge protection > 1kV Consumption in passive mode < 0.07 W Power supply AC/DC efficiency at highest level (VI) Screw terminals Class II ELV ○ White ● Aluminium ● Medium grey ● Black
1	8 633 39	
1	8 634 39	
1	8 635 39	
1	8 631 40	<b>Double USB charging socket Type A+C</b> USB-C: 5 V, 3 A, 15 W USB-A: 5 V, 2.4 A, 12 W For smartphones, and fast charging tablet PC Conform to IEC 62680-1-3 Certified USB-IF Surge protection > 1kV Consumption in passive mode < 0.07 W Power supply AC/DC efficiency at highest level (VI) Screw terminals Class II ELV ○ White ● Aluminium ● Medium grey ● Black
1	8 633 40	
1	8 634 40	
1	8 635 40	

Pack	Cat.Nos	USB charging sockets (continued)
1	8 630 39	<b>Wireless charger + Type A USB socket</b> Supplied with white cover plate 1000 mA wireless charger with 1 USB socket 2.4 A, 12 W To be installed in flush-mounting boxes, surface mounting boxes, etc. Power supply stand-by mode consumption < 0.07 W Equipped with 2 induction antennas to guarantee a fast and intuitive charge of the smartphone Recognition area: 50 x 80 mm 10° inclined plate with non-slip coating to secure the terminal during charging ○ White

# Niloé™ Step

## RJ45 and telephone sockets



8 633 66 + 8 633 91



8 631 59 + 8 631 91



8 631 71 + 8 631 91

Mechanisms supplied with support frames and cover plates  
To be equipped with plates (p. 24)  
Fixing with claws (supplied) or screws

Pack	Cat.Nos	Data sockets Cat. 6A
		With LCS <sup>2</sup> connector with fast connection thanks to integrated crimping Take AWG 22 single-core cables up to AWG 26 and AWG multicore cables Contacts marked with dual colour code and wiring schemes 568 A and 568 B Conform to standards ISO/IEC 11801 Ed. 2.0, amendment 2, EN 50173-1 and TIA/EIA 568 C2
10	8 631 67	<b>RJ45 socket Cat. 6A UTP</b>
5	8 633 67	○ White
5	8 634 67	● Aluminium
5	8 635 67	● Medium grey
		● Black
10	8 631 69	<b>RJ45 socket Cat. 6A STP</b>
5	8 633 69	○ White
5	8 634 69	● Aluminium
5	8 635 69	● Medium grey
		● Black
5	8 631 68	<b>Double RJ45 socket Cat. 6A UTP</b>
5	8 633 68	○ White
5	8 634 68	● Aluminium
5	8 635 68	● Medium grey
		● Black
5	8 631 70	<b>Double RJ45 socket Cat. 6A STP</b>
5	8 633 70	○ White
5	8 634 70	● Aluminium
5	8 635 70	● Medium grey
		● Black
		<b>Data sockets Cat. 6</b>
		With LCS <sup>2</sup> connector with fast connection thanks to integrated crimping Take AWG 22 single-core cables up to AWG 26 and AWG multicore cables Contacts marked with dual colour code and wiring schemes 568 A and 568 B Conform to standards ISO/IEC 11801 Ed. 2.0, amendment 2, EN 50173-1 and TIA/EIA 568 C2
10	8 631 63	<b>RJ45 socket Cat. 6 UTP</b>
5	8 633 63	○ White
5	8 634 63	● Aluminium
5	8 635 63	● Medium grey
		● Black
10	8 631 65	<b>RJ45 socket Cat. 6 STP</b>
5	8 633 65	○ White
5	8 634 65	● Aluminium
5	8 635 65	● Medium grey
		● Black
10	8 631 61	<b>RJ45 socket Cat. 6 FTP</b>
5	8 633 61	○ White
5	8 634 61	● Aluminium
5	8 635 61	● Medium grey
		● Black
5	8 631 64	<b>Double RJ45 socket Cat. 6 UTP</b>
5	8 633 64	○ White
5	8 634 64	● Aluminium
5	8 635 64	● Medium grey
		● Black
5	8 631 66	<b>Double RJ45 socket Cat. 6 STP</b>
5	8 633 66	○ White
5	8 634 66	● Aluminium
5	8 635 66	● Medium grey
		● Black

Pack	Cat.Nos	Data sockets Cat. 6 (continued)
5	8 631 62	<b>Double RJ45 socket Cat. 6 FTP</b>
5	8 633 62	○ White
5	8 634 62	● Aluminium
5	8 635 62	● Medium grey
		● Black
5	8 631 56	<b>RJ11 socket + RJ45 socket Cat. 6 UTP</b>
5	8 633 56	○ White
5	8 634 56	● Aluminium
5	8 635 56	● Medium grey
		● Black
		<b>Data sockets Cat. 5e</b>
		With LCS <sup>2</sup> connector with fast connection thanks to integrated crimping Take AWG 22 single-core cables up to AWG 26 and AWG multicore cables Contacts marked with dual colour code and wiring schemes 568 A and 568 B Conform to standards ISO/IEC 11801 Ed. 2.0, amendment 2, EN 50173-1 and TIA/EIA 568 C2
10	8 631 59	<b>RJ45 socket Cat. 5e UTP</b>
5	8 633 59	○ White
5	8 634 59	● Aluminium
5	8 635 59	● Medium grey
		● Black
10	8 631 57	<b>RJ45 socket Cat. 5e FTP</b>
5	8 633 57	○ White
5	8 634 57	● Aluminium
5	8 635 57	● Medium grey
		● Black
5	8 631 60	<b>Double RJ45 socket Cat. 5e UTP</b>
5	8 633 60	○ White
5	8 634 60	● Aluminium
5	8 635 60	● Medium grey
		● Black
5	8 631 58	<b>Double RJ45 socket Cat. 5e FTP</b>
5	8 633 58	○ White
5	8 634 58	● Aluminium
5	8 635 58	● Medium grey
		● Black
5	8 631 71	<b>SC/APC single-mode fiber optic socket</b>
5	8 633 71	○ White
5	8 634 71	● Aluminium
5	8 635 71	● Medium grey
		● Black
10	8 631 87	<b>Keystone adaptor - single</b>
5	8 633 87	○ White
5	8 634 87	● Aluminium
5	8 635 87	● Medium grey
		● Black
10	8 631 88	<b>Systemax adaptor - single</b>
5	8 633 88	○ White
5	8 634 88	● Aluminium
5	8 635 88	● Medium grey
		● Black
		<b>RJ11 telephone socket</b>
		Equipped with modular jack connector with 1/4 turn terminal for fast connection. Tap-off possible
10	8 631 55	○ White
5	8 633 55	● Aluminium
5	8 634 55	● Medium grey
5	8 635 55	● Black



8 631 83 + 8 631 91



8 631 76 + 8 631 91



8 634 77 + 8 634 91



8 631 78 + 8 631 91

Mechanisms supplied with support frames and cover plates  
To be equipped with plates (p. 24)  
Fixing with claws (supplied) or screws

Pack	Cat.Nos	Star architecture TV sockets
		Star cabling (1 socket = 1 cable to antenna) ensures a HD quality level of distribution of TV standard For distribution of TV & Radio signals All operators (DVB-T, satellite, Cablecast) Meet EN 50083-4 and EN 50083-2 European Directive HDTV compatible: low attenuation (< 1.5 dB) LTE ready, shielded socket to protect against interference from mobile phone network 3G & 4G signals TV male connector (Ø9.5 mm) R female connector (Ø9.5 mm) SAT "F" type connector Recommended coaxial cable: 17/19 VATC Visual checking of the connection
		<b>TV-R-SAT socket</b> Low attenuation: 1.5 dB TV: 5-68/120-862 MHz R: 87.5-108 MHz SAT: 950-2400 MHz
10	8 631 80	○ White
5	8 633 80	● Aluminium
5	8 634 80	● Medium grey
5	8 635 80	● Black
		<b>TV-R-SAT-SAT socket - 2 cables</b> Low attenuation: 1.5 dB TV: 5-68/120-862 MHz R: 87.5-108 MHz SAT: 950-2400 MHz
10	8 631 82	○ White
5	8 633 82	● Aluminium
5	8 634 82	● Medium grey
5	8 635 82	● Black
		<b>TV-SAT socket - 2 cables</b> Low attenuation: 1.5 dB TV: 5-68/120-862 MHz SAT: 950-2400 MHz
10	8 631 83	○ White
5	8 633 83	● Aluminium
5	8 634 83	● Medium grey
5	8 635 83	● Black
		<b>Male TV socket</b> Low attenuation: 1.5 dB TV: 0-2400 MHz
10	8 631 74	○ White
5	8 633 74	● Aluminium
5	8 634 74	● Medium grey
5	8 635 74	● Black
		<b>"F" type TV socket</b> Low attenuation: 1.5 dB TV: 0-2400 MHz
10	8 631 75	○ White
5	8 633 75	● Aluminium
5	8 634 75	● Medium grey
5	8 635 75	● Black
		<b>Double "F" type TV socket</b> Low attenuation: 1.5 dB TV: 0-2400 MHz
5	8 631 76	○ White
5	8 633 76	● Aluminium
5	8 634 76	● Medium grey
5	8 635 76	● Black

Pack	Cat.Nos	Star architecture TV sockets (continued)
		<b>"F" type TV socket + RJ45 socket Cat. 6 UTP</b> Low attenuation: 1.5 dB TV: 0-2400 MHz
10	8 631 77	○ White
5	8 633 77	● Aluminium
5	8 634 77	● Medium grey
5	8 635 77	● Black
		<b>Passthrough TV sockets</b> Installation in case of maintenance Amplifier and line balancing are recommended TV male connector (Ø9.5 mm) R female connector (Ø9.5 mm) SAT "F" type connector Recommended coaxial cable: 17/19 VATC Visual checking of the connection
		<b>TV-R-SAT socket</b> Attenuation: 14 dB TV: 5-68/120-862 MHz R: 87.5-108 MHz SAT: 950-2400 MHz
10	8 631 78	○ White
5	8 633 78	● Aluminium
5	8 634 78	● Medium grey
5	8 635 78	● Black
		<b>Male TV socket</b> Attenuation: 14 dB TV: 0-862 MHz
10	8 631 72	○ White
5	8 633 72	● Aluminium
5	8 634 72	● Medium grey
5	8 635 72	● Black
		<b>Terminal TV sockets</b> Installation in case of maintenance Amplifier and line balancing are recommended TV male connector (Ø9.5 mm) R female connector (Ø9.5 mm) SAT "F" type connector Recommended coaxial cable: 17/19 VATC Visual checking of the connection 1 input with 1 resistance cap socket
		<b>TV-R-SAT socket</b> Attenuation: 10 dB TV: 5-68/120-862 MHz R: 87.5-108 MHz SAT: 950-2400 MHz
10	8 631 79	○ White
5	8 633 79	● Aluminium
5	8 634 79	● Medium grey
5	8 635 79	● Black
		<b>Male TV socket</b> Attenuation: 10 dB TV: 0-862 MHz
10	8 631 73	○ White
5	8 633 73	● Aluminium
5	8 634 73	● Medium grey
5	8 635 73	● Black
		<b>TV-R-SAT socket cover 30 mm</b> To be clipped on competitors' mechanisms
10	8 631 84	○ White
5	8 633 84	● Aluminium
5	8 634 84	● Medium grey
5	8 635 84	● Black

# Niloé™ Step

## thermostats, loudspeaker sockets and accessories



8 633 86 + 8 633 91








8 631 29 + 8 631 91

Mechanisms supplied with support frames and cover plates  
To be equipped with plates (p. 24)  
Fixing with claws (supplied) or screws

Pack	Cat.Nos	Thermostats
		<b>Electronic room thermostat</b> Control knob with index and adjustable segments for min. and max. settings Adjustable range from 5°C to 30°C (+/- 0.5°C) Power supply: 230 VA - 50/60 Hz One potential-free changeover contact output Suitable for controlling heated ceilings and underfloor heating - LV use breaking capacity: 8 A - 250 VA - resistive inductive circuit 2 A - 250 VA - inductive circuit - ELV use breaking capacity: 12 to 48 VA - 12 to 24 V=, from 1 mA min. to 500 mA max. Screw terminals
1	8 631 41	<ul style="list-style-type: none"> <li>○ White</li> <li>● Aluminium</li> <li>● Medium grey</li> <li>● Black</li> </ul>
1	8 633 41	
1	8 634 41	
1	8 635 41	
		<b>Floor heating thermostat</b> With one potential-free N/O contact and LED 16 A - 230 VA Adjustable range from 10°C to 60°C Supplied with 4 m floor sensor (max. sensor length: 20 m). Automatic freeze protection below 7°C. Screw terminals
1	8 631 42	<ul style="list-style-type: none"> <li>○ White</li> <li>● Aluminium</li> <li>● Medium grey</li> <li>● Black</li> </ul>
1	8 633 42	
1	8 634 42	
1	8 635 42	

Pack	Cat.Nos	Loudspeaker sockets
		Max. wire diameter: 4 mm <sup>2</sup> <b>Single socket</b>
10	8 631 85	<ul style="list-style-type: none"> <li>○ White</li> <li>● Aluminium</li> <li>● Medium grey</li> <li>● Black</li> </ul>
5	8 633 85	
5	8 634 85	
5	8 635 85	
		<b>Double socket</b>
10	8 631 86	<ul style="list-style-type: none"> <li>○ White</li> <li>● Aluminium</li> <li>● Medium grey</li> <li>● Black</li> </ul>
5	8 633 86	
5	8 634 86	
5	8 635 86	






Pack	Cat.Nos	Accessories
		<b>Blanking plate</b>
10	8 631 00	<ul style="list-style-type: none"> <li>○ White</li> <li>● Aluminium</li> <li>● Medium grey</li> <li>● Black</li> </ul>
5	8 633 00	
5	8 634 00	
5	8 635 00	
		<b>Cable outlet IP21</b> Maximum cable diameter: 12 mm With cable grip
10	8 631 29	<ul style="list-style-type: none"> <li>○ White</li> <li>● Aluminium</li> <li>● Medium grey</li> <li>● Black</li> </ul>
5	8 633 29	
5	8 634 29	
5	8 635 29	
		<b>Mosaic adaptor</b>
10	8 631 89	<ul style="list-style-type: none"> <li>○ White</li> <li>● Aluminium</li> <li>● Medium grey</li> <li>● Black</li> </ul>
5	8 633 89	
5	8 634 89	
5	8 635 89	
		<b>1-gang surface mounting box</b>
10	8 631 97	<ul style="list-style-type: none"> <li>○ White</li> <li>● Aluminium</li> <li>● Medium grey</li> <li>● Black</li> </ul>
4	8 633 97	
4	8 634 97	
4	8 635 97	
		<b>2-gang surface mounting box</b>
5	8 631 98	<ul style="list-style-type: none"> <li>○ White</li> <li>● Aluminium</li> <li>● Medium grey</li> <li>● Black</li> </ul>
5	8 633 98	
5	8 634 98	
5	8 635 98	

DESIGNATION	MECHANISM + COVER PLATE				
	Red 	White 	Aluminium 	Medium grey 	Black 
Blanking plate	-	8 631 00	8 633 00	8 634 00	8 635 00
1-way switch 10 AX automatic terminals	-	8 631 01	8 633 01	8 634 01	8 635 01
1-way 3-gang switch 10 AX screw terminals	-	8 631 03	8 633 03	8 634 03	8 635 03
1-way 2-gang switch 10 AX automatic terminals	-	8 631 05	8 633 05	8 634 05	8 635 05
2-way switch 10 AX automatic terminals	-	8 631 06	8 633 06	8 634 06	8 635 06
intermediate switch 10 AX	-	8 631 07	8 633 07	8 634 07	8 635 07
2-way 2-gang switch 10 AX automatic terminals	-	8 631 08	8 633 08	8 634 08	8 635 08
1-way push-button	-	8 631 09	8 633 09	8 634 09	8 635 09
1-way push-button illuminated with bell symbol	-	8 631 10	8 633 10	8 634 10	8 635 10
1-way switch illuminated 10 AX automatic terminals	-	8 631 11	8 633 11	8 634 11	8 635 11
2-gang 1-way push-button 6 A automatic terminals	-	8 631 12	8 633 12	8 634 12	8 635 12
1-way 2-gang switch illuminated 10 AX automatic terminals	-	8 631 15	8 633 15	8 634 15	8 635 15
2-way switch illuminated 10 AX automatic terminals	-	8 631 16	8 633 16	8 634 16	8 635 16
2-way 2-gang switch illuminated 10 AX automatic terminals	-	8 631 18	8 633 18	8 634 18	8 635 18
2P socket screw terminals shuttered	-	8 631 19	8 633 19	8 634 19	8 635 19
2P+E socket German standard auto terminals shuttered VDE certified	-	8 631 20	8 633 20	8 634 20	8 635 20
2P+E socket German standard screw terminals VDE certified	-	8 631 21	8 633 21	8 634 21	8 635 21
2 x 2P+E socket German standard auto terminals shuttered	-	8 631 22	8 633 22	8 634 22	8 635 22
IP44 2P+E socket German standard auto terminals shuttered	-	8 631 23	8 633 23	8 634 23	8 635 23
Combined socket 2P+E German standard auto terminals shuttered + USB type C	-	8 631 26	8 633 26	8 634 26	8 635 26
2 x 2P+E socket French standard screw terminals shuttered (specific czech)	-	8 631 27	8 633 27	8 634 27	8 635 27
Cable outlet IP21	-	8 631 29	8 633 29	8 634 29	8 635 29
2P+E socket French standard screw terminals, shuttered, red color	8 630 30	-	-	-	-
2P+E socket French standard screw terminals	-	8 631 30	8 633 30	8 634 30	8 635 30
2P+E socket French standard screw terminals, shuttered, red color, tamperproof	8 630 31	-	-	-	-
2P+E socket French standard auto terminals	-	8 631 31	8 633 31	8 634 31	8 635 31
2 x 2P+E socket French standard screw terminals (specific polish)	-	8 631 32	8 633 32	8 634 32	8 635 32
2P+E socket French standard auto terminals shuttered	-	8 631 33	8 633 33	8 634 33	8 635 33
2 x 2P+E socket French standard screw terminals shuttered (specific polish)	-	8 631 34	8 633 34	8 634 34	8 635 34
IP44 2P+E socket French standard screw terminals	-	8 631 35	8 633 35	8 634 35	8 635 35
IP44 2P+E socket French standard auto terminals shuttered	-	8 631 36	8 633 36	8 634 36	8 635 36
2 x 2P+E socket French standard screw terminals (specific czech)	-	8 631 37	8 633 37	8 634 37	8 635 37
Combined socket 2P+E French standard auto terminals shuttered + USB type C	-	8 631 38	8 633 38	8 634 38	8 635 38
Wireless charger + USB Type A - white	-	8 630 39	-	-	-
2xUSB 1500 mA - Type C+C	-	8 631 39	8 633 39	8 634 39	8 635 39
2xUSB 3000 mA - Type A+C	-	8 631 40	8 633 40	8 634 40	8 635 40
Thermostat (normal)	-	8 631 41	8 633 41	8 634 41	8 635 41
Thermostat floor heating	-	8 631 42	8 633 42	8 634 42	8 635 42
Roller blind push-button 2 positions	-	8 631 43	8 633 43	8 634 43	8 635 43
Roller blind switch 3 positions	-	8 631 44	8 633 44	8 634 44	8 635 44
Ventilation control switch (0,1,2,3)	-	8 631 45	8 633 45	8 634 45	8 635 45
Mechanical keycard switch	-	8 631 46	8 633 46	8 634 46	8 635 46



# Niloé™ Step

## mechanisms selection chart (continued)

DESIGNATION	MECHANISM + COVER PLATE				
	Red 	White 	Aluminium 	Medium grey 	Black 
Electronic keycard switch with delay	-	8 631 47	8 633 47	8 634 47	8 635 47
Motion sensor 2 wires with switch universal	-	8 631 48	8 633 48	8 634 48	8 635 48
Motion sensor 3 wires universal	-	8 631 49	8 633 49	8 634 49	8 635 49
IP44 motion sensor 2 wires with switch universal	-	8 631 50	8 633 50	8 634 50	8 635 50
Skirting light	-	8 631 51	8 633 51	8 634 51	8 635 51
Rotary dimmer 300 W all charges	-	8 631 52	8 633 52	8 634 52	8 635 52
Push-button dimmer all charges	-	8 631 53	8 633 53	8 634 53	8 635 53
RJ11 socket	-	8 631 55	8 633 55	8 634 55	8 635 55
RJ11+RJ45 Cat.6 UTP sockets	-	8 631 56	8 633 56	8 634 56	8 635 56
RJ45 Cat.5e FTP socket	-	8 631 57	8 633 57	8 634 57	8 635 57
2 x RJ45 Cat.5e FTP socket	-	8 631 58	8 633 58	8 634 58	8 635 58
RJ45 Cat.5e UTP socket	-	8 631 59	8 633 59	8 634 59	8 635 59
2 x RJ45 Cat.5e UTP socket	-	8 631 60	8 633 60	8 634 60	8 635 60
RJ45 Cat.6 FTP socket	-	8 631 61	8 633 61	8 634 61	8 635 61
2 x RJ45 Cat.6 FTP socket	-	8 631 62	8 633 62	8 634 62	8 635 62
RJ45 Cat.6 UTP socket	-	8 631 63	8 633 63	8 634 63	8 635 63
2 x RJ45 Cat.6 UTP socket	-	8 631 64	8 633 64	8 634 64	8 635 64
RJ45 Cat.6 STP socket	-	8 631 65	8 633 65	8 634 65	8 635 65
2 x RJ45 Cat.6 STP socket	-	8 631 66	8 633 66	8 634 66	8 635 66
RJ45 Cat.6A UTP socket	-	8 631 67	8 633 67	8 634 67	8 635 67
2 x RJ45 Cat.6A UTP socket	-	8 631 68	8 633 68	8 634 68	8 635 68
RJ45 Cat.6A STP socket	-	8 631 69	8 633 69	8 634 69	8 635 69
2 x RJ45 Cat.6A STP socket	-	8 631 70	8 633 70	8 634 70	8 635 70
SC/APC single-mode fiber optic socket	-	8 631 71	8 633 71	8 634 71	8 635 71
TV male passthrough socket - 14db	-	8 631 72	8 633 72	8 634 72	8 635 72
TV male terminal socket - 10db	-	8 631 73	8 633 73	8 634 73	8 635 73
TV male star socket	-	8 631 74	8 633 74	8 634 74	8 635 74
TV "F" type star socket	-	8 631 75	8 633 75	8 634 75	8 635 75
TV double "F" type star socket	-	8 631 76	8 633 76	8 634 76	8 635 76
TV "F" type star + RJ45 Cat.6 UTP sockets	-	8 631 77	8 633 77	8 634 77	8 635 77
TV-R-SAT male passthrough socket - 14 db	-	8 631 78	8 633 78	8 634 78	8 635 78
TV-R-SAT male passthrough socket - 10 db	-	8 631 79	8 633 79	8 634 79	8 635 79
TV-R-SAT male star socket	-	8 631 80	8 633 80	8 634 80	8 635 80
TV-R-SAT-SAT male star sockets - 2 cables	-	8 631 82	8 633 82	8 634 82	8 635 82
TV-SAT male star socket - 2 cables	-	8 631 83	8 633 83	8 634 83	8 635 83
TV-R-SAT socket cover 30 mm	-	8 631 84	8 633 84	8 634 84	8 635 84
Loudspeaker socket	-	8 631 85	8 633 85	8 634 85	8 635 85
Double loudspeaker socket	-	8 631 86	8 633 86	8 634 86	8 635 86
Keystone adaptor	-	8 631 87	8 633 87	8 634 87	8 635 87
Systimax adaptor	-	8 631 88	8 633 88	8 634 88	8 635 88
Mosaic adaptor	-	8 631 89	8 633 89	8 634 89	8 635 89

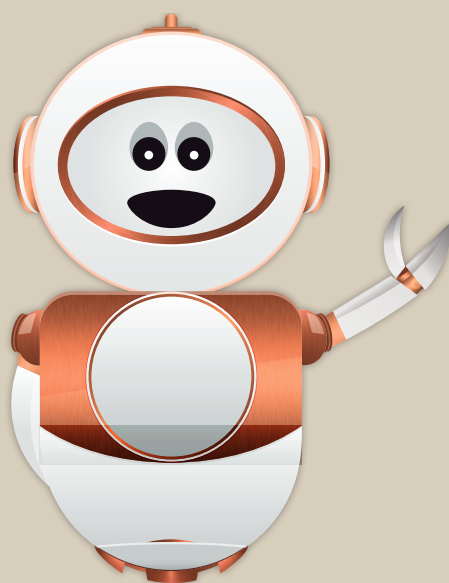
# Niloé™ Step

## plates selection chart

All plates can be mounted horizontally or vertically

FINISH	PLATES				
	1 gang	2 gang	3 gang	4 gang	5 gang
<b>White</b>	8 631 91	8 631 92	8 631 93	8 631 94	8 631 95
<b>White IP44</b>	8 631 96	-	-	-	-
<b>Aluminium</b>	8 633 91	8 633 92	8 633 93	8 633 94	8 633 95
<b>Aluminium IP44</b>	8 633 96	-	-	-	-
<b>Medium grey</b>	8 634 91	8 634 92	8 634 93	8 634 94	8 634 95
<b>Medium grey IP44</b>	8 634 96	-	-	-	-
<b>Black</b>	8 635 91	8 635 92	8 635 93	8 635 94	8 635 95
<b>Black IP44</b>	8 635 96	-	-	-	-
<b>Atoll</b>	8 630 91	8 630 92	8 630 93	8 630 94	8 630 95
<b>Old pink</b>	8 632 91	8 632 92	8 632 93	8 632 94	8 632 95
<b>Pearl</b>	8 636 91	8 636 92	8 636 93	8 636 94	8 636 95
<b>Dark grey</b>	8 637 91	8 637 92	8 637 93	8 637 94	8 637 95
<b>Brushed aluminium</b>	8 638 91	8 638 92	8 638 93	8 638 94	8 638 95
<b>Brushed medium grey</b>	8 639 91	8 639 92	8 639 93	8 639 94	8 639 95





# Niloé™ Step

 **legrand®**

**World Headquarters**  
and International Department  
87045 Limoges Cedex - France  
☎ : + 33 (0) 5 55 06 87 87  
Fax: + 33 (0) 5 55 06 74 55